

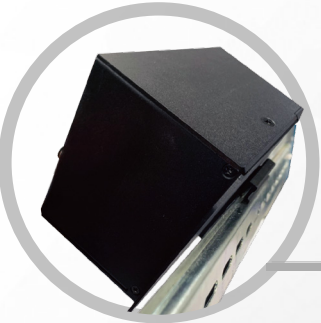


## Industrial Grade

Konten's industrial grade Ethernet switch supports wide operating temperature (from -40°C to 75°C) under extreme conditions.



-40 to 75°C



## Flexible Mounting

The flexible din-rail/wall mount installation and compact form factor of ET-0804C-M12 make it ideal to set up in the limited cabinets that had space constraints such as the old type train, Light Rail Transit (LRT) or the metro cabins.

## Dust & Water Proof

This unit is IP40 / IP54 (Optional) housing for the humid environment.



## Shock and Vibration Resistant

ET-0804C-M12 is certified with EN 50155. All of the ports come in M12 form to ensure reliable connection during train movement. While the train is ongoing, even a straight track might not feel smooth. That's why we need to design this rigidize shock and vibration resistant.

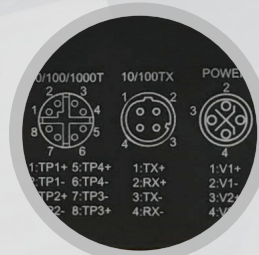
## Compact Size ★ ★ ★

It is designed with the size of a palm. Its compact size make it easy to set up in the limited cabinet at the LRT or even the old train.



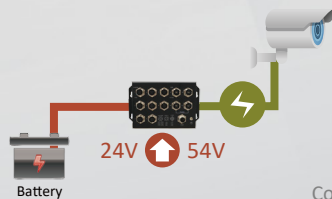
## Gigabit Port

4 high speed gigabit ports for high resolution camera image data transmission.



## PoE & Booster

The PoE boost built inside ET-0804C-M12 supports 24V power input via its booster function and then provide the power output to the other devices with its PoE features. By this way the network topology getting simpler that can remove the need for extra wires and reduce costs.



# ET-0804C-M12

## Unmanaged PoE Compact Size Switch

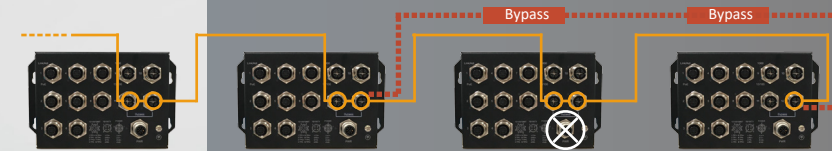
Konten Networks EN 50155 product family welcomes new member ET-0804C-M12. It is designed in accordance with the EN 50155 standard and a rugged design to withstand harsh environments in rolling stock and in-vehicle communication systems.

Its compact size, flexible installation and easy 1. plug-n-play make your project easy to operate and maintain.

The E Mark certificated will be available in Nov./E 2020.

## ★ ★ ★ Bypass

ET-0804C-M12 is designed to support the bypass relay to mitigate a failure on either auxiliary power or other error. Its includes 1 set of bypass ports that protect the network from failures and Network maintenance by ensuring network integrity during power loss.



In case of power failure, bypass function start to work.

## Lightning and Surge Protection



This M12 Ethernet switch is the equipment designed for the electrical environment on-board. Its isolation and overvoltage protection can let it has the ability to connect directly to the train mains for ultimate robustness.